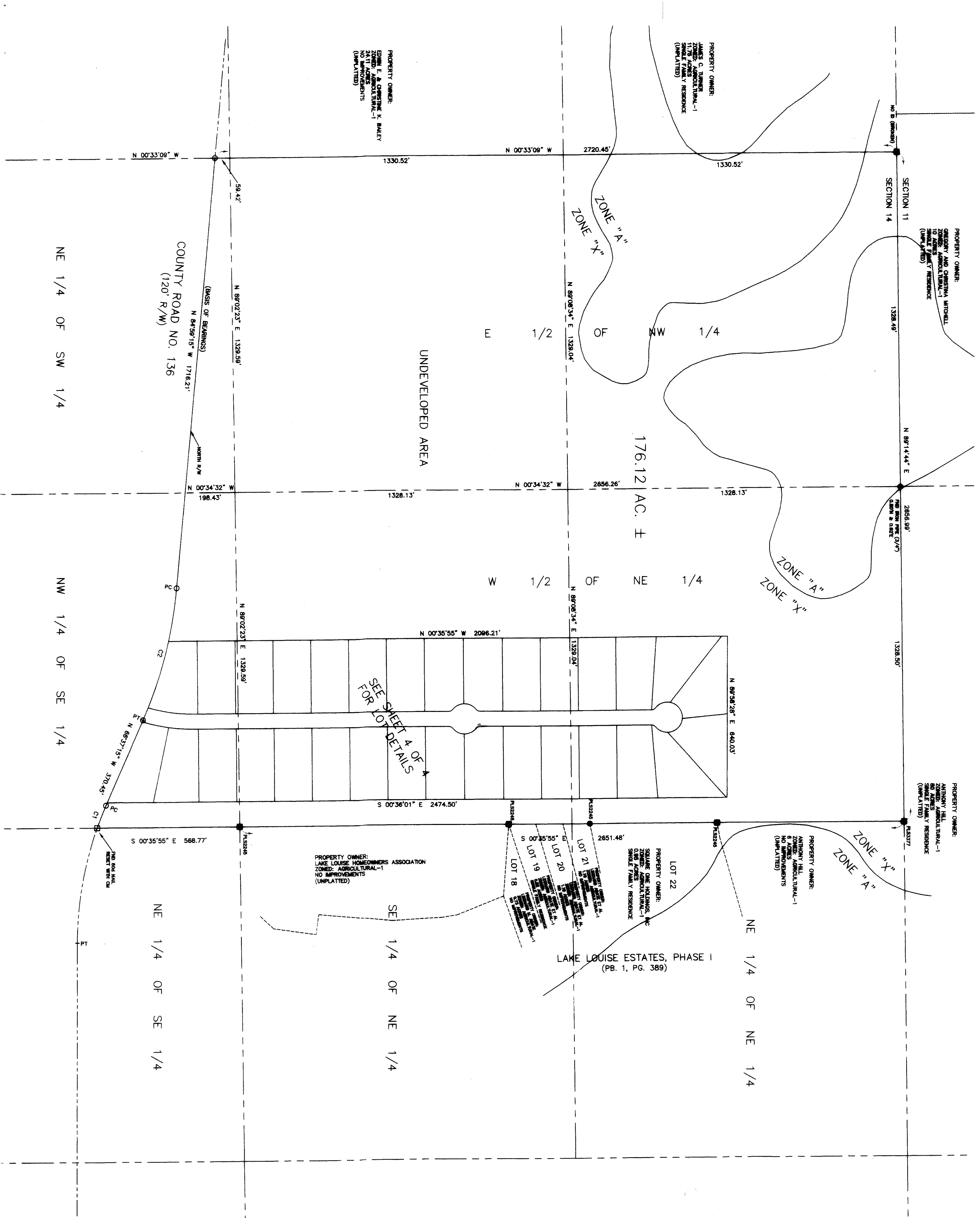


Deer LAKE PRESERVE

J. SHERMAN FRIER & ASSOCIATES, INC.
 LAND SURVEYORS
 CERTIFICATE OF AUTHORIZATION - L.A. # 7179
 139 W. HOWARD STREET, LIME OAK, FL 32804
 PHONE: 305-363-4433 FAX: 305-363-4570
 EMAIL: jfrier@shermafrier.com
 BUSINESS NO. 207-16-9930

DEER LAKE PRESERVE
 PLANNED RURAL RESIDENTIAL DEVELOPMENT
 SECTION 14, TOWNSHIP 2 SOUTH, RANGE 14 EAST
 IN
 SUWANNEE COUNTY, FLORIDA

DESCRIPTION:
 THE E 1/2 OF THE NW 1/4; THE W 1/2 OF THE NE 1/4 AND THAT PART OF THE NW 1/4 OF THE SE 1/4 AND THAT PART OF THE NE 1/4 OF THE SW 1/4 LYING NORTH OF THE RIGHT-OF-WAY OF COUNTY ROAD NO. 136 IN SECTION 14, TOWNSHIP 2 SOUTH, RANGE 14 EAST, SUWANNEE COUNTY, FLORIDA, CONTAINING 176.12 ACRES, MORE OR LESS.



CURVE TABLE

CURVE	RADIUS	DELTA ANGLE	CHORD BEARING	CHORD LENGTH	ARC LENGTH
C1	1372.39'	04°00'25"	N 89°37'28" W	505.98'	66.88'
C2	1897.02'	18°22'00"	S 75°48'15" E	541.87'	543.99'

