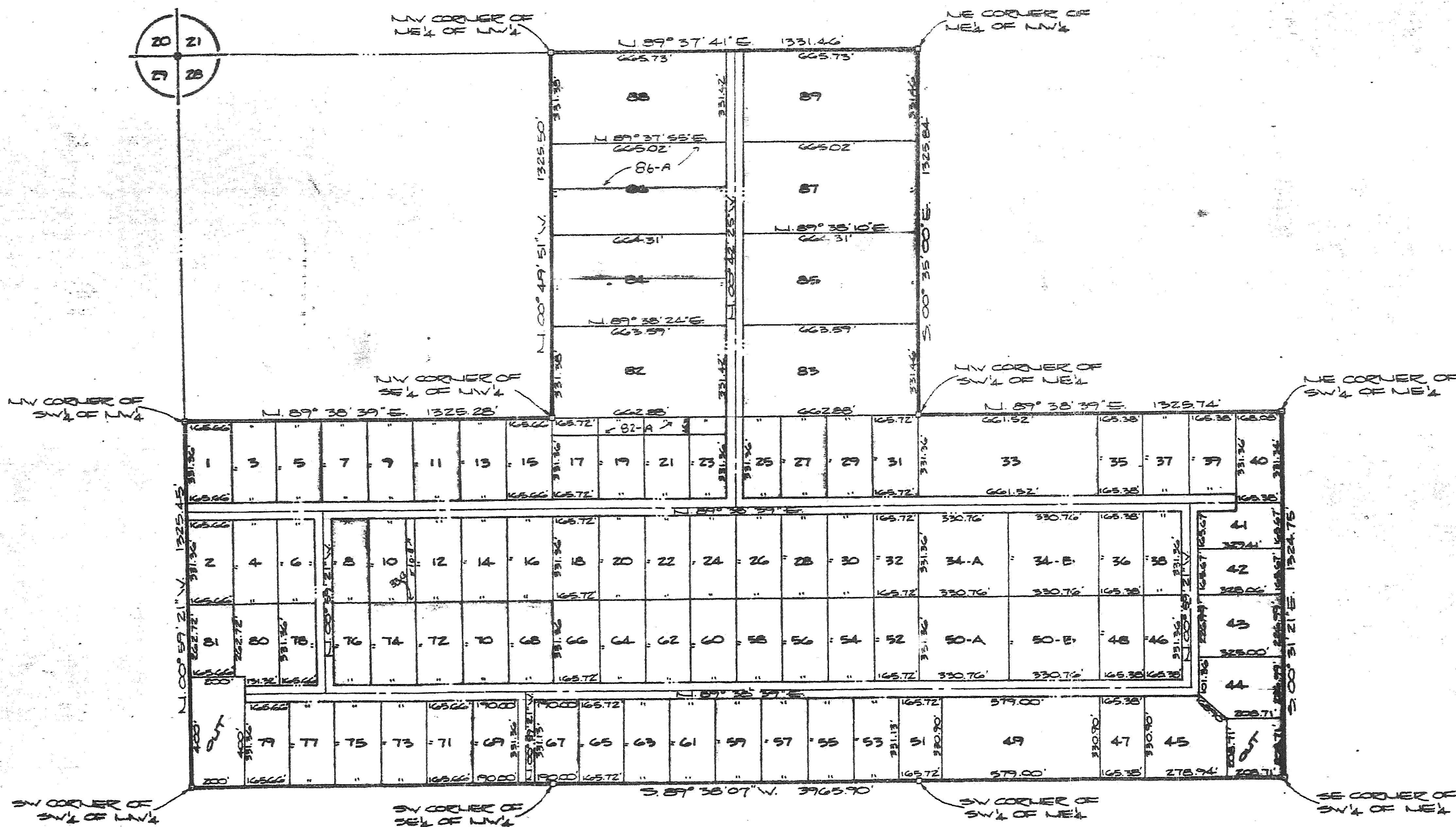


PEACOCK HIDEAWAY

A SUBDIVISION IN SECTION 28, TOWNSHIP 4 SOUTH,
RANGE 12 EAST, SUWANNEE COUNTY, FLORIDA.



N
SCALE: 1"=300'

NOTE:
 1) LOT LINES OF LOTS 1 THROUGH 31 ARE RUNNING N. 89° 56' 57" E AND N. 00° 59' 21" W UNLESS OTHERWISE NOTED.
 2) LOT DISTANCES ARE GIVEN TO ACCESS ROAD CENTERLINES.
 3) THIS DRAWING PREPARED FROM INFORMATION BY OTHERS AND DOES NOT CONSTITUTE A SURVEY.