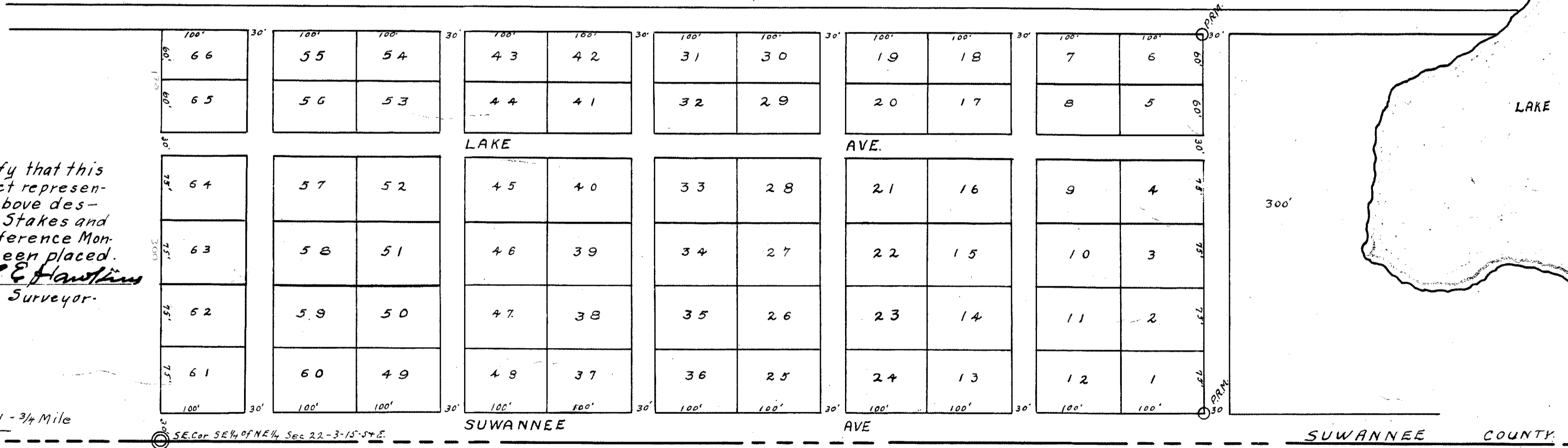


Randall's
Sub. O.

~ RANDALLS SUBDIVISION ~
~ SUWANNEE COUNTY, FLA. ~
~ SE 1/4 of NE 1/4, SEC 22-3-15 SE ~

Beginning at the S.E. Cor. of SE 1/4 of NE 1/4 Sec 22 Twp 35.
R. 15 E going thence West 480 ft, thence North 1280 ft. -
thence East 480 ft, thence South 1280 ft. to point
of beginning



I hereby certify that this
is a correct representation
of the above des-
cribed lands. Stakes and
Permanent Reference Mon-
uments have been placed.

S. E. Hanshaw
Surveyor.

State Highway #1 - 3/4 Mile

Dedication & Adoption:

I do hereby certify that we the undersigned are the lawful
owners of the lands described in the caption here on.
We have caused the same to be surveyed and this
plat made in accordance with the survey, is hereby adopted
as the true and correct plat of said lands, and all
streets, and alleys, shown upon this plat, are hereby
dedicated and without reservation dedicated to the
City of Suwannee and its successors.

In witness whereof these presents are signed this
day of January AD 1926

H. Israel
Witnesses

W. B. Randall
Nannie Randall
Owners

Examined and approved this day of January AD 1926.
City of Suwannee Commissioners Suwannee County Fla.

I do hereby certify that this Plat has been examined and
it complies inform with Chapter 10275, Laws of
Florida of 1925, and filed for record and recorded
at Book number on Page of the public
Records of Suwannee County Florida this day
of January AD. 1926

Clerk
Dep. Clerk.

State of Florida.
County of Suwannee.
Personally appeared before me Nannie Randall
known to be the person described in the dedication
and who executed the foregoing dedication to
Suwannee County on examination taken and made
separately and apart from her said husband, did
acknowledge that She made herself a party to the
said dedication for the purpose of relinquishing
and renouncing and conveying all of her rights,
title and interest, whether dower homestead or
separate described therein, the Roads, Streets,
and alleys, in said dedication freely and volun-
tarily with out compulsion constraint, apprehen-
sion of fear from her husband.

State of Florida.
County of Suwannee.
Personally appeared before me a Notary Public -
W. B. Randall known to be the persons described
in the dedication and who executed the foregoing
dedication to Suwannee County and acknowledged
before me that He executed the same freely
and voluntarily for the purposes therein expressed.

Witness my hand and Seal at Live Oak Florida
This the 22 day January AD 1926.

Verdie O. Hana
Notary Public State of Fla. at large.
My commission expires 3-11-29.