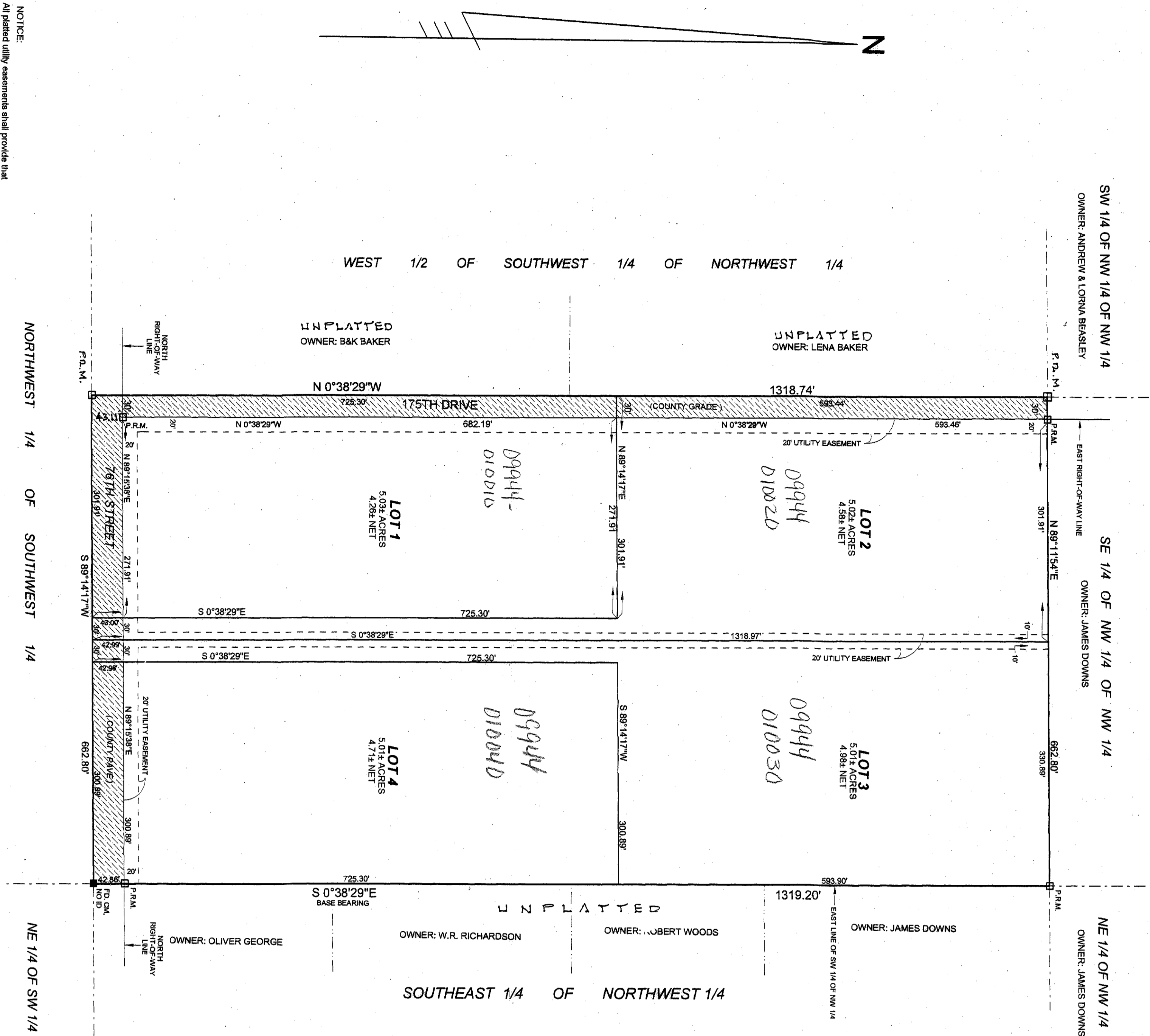


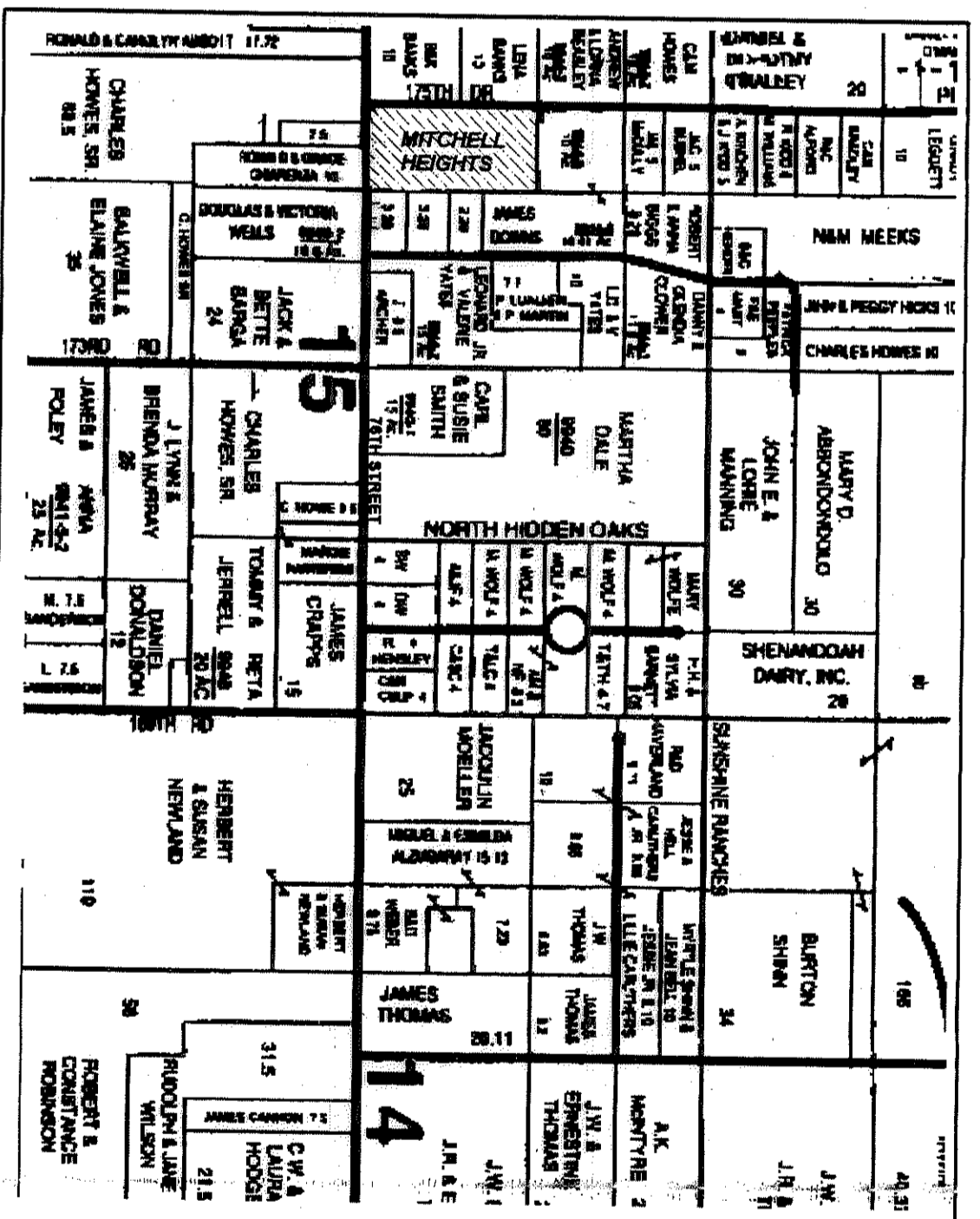
MITCHELL HEIGHTS

THE EAST 1/2 OF THE SOUTHWEST 1/4 OF SECTION 14 OF THE NORTHWEST 1/4 OF TOWNSHIP 2 SOUTH, RANGE 12 EAST, SUWANNEE COUNTY, FLORIDA CONTAINING 20.06 ACRES MORE OR LESS SUBJECT TO COUNTY ROAD RIGHT-OF-WAY

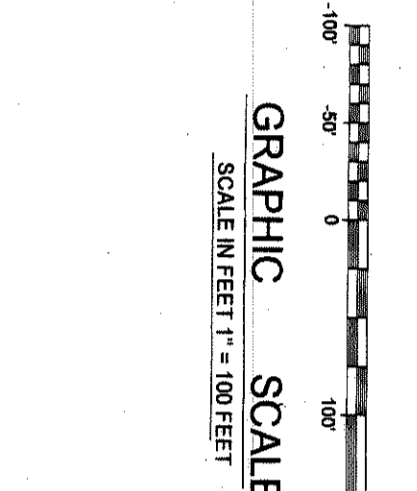


LEGEND AND NOTES:

- 1) 58' X 20' REAR WITH CURB STAMPEDED B & # 1710 SET ON ALL LOT CORNERS AND THE INTERSECTIONS OF LOT LINES AND DEDICATED RIGHT-OF-WAY LINES.
2) BEARINGS BASED ON THE EAST LINE OF SW 1/4 OF NW 1/4 (0° 38' 29" E)
3) FOR SECTION BREAKDOWN, SEE JOB FILE THIS OFFICE.



NOTICE: All plat utility assessments shall provide that such assessments shall also be assessments for the construction, installation, maintenance, and operation of cable television services...



BUILDING SET BACKS: FRONT: 30 FEET, REAR: 15 FEET

FLOOD ZONE INFORMATION: THE PROPERTY IS SHOWN WITHIN FLOOD ZONE 'X' AS PER THE FLOOD INSURANCE RATE MAP OF THE FEDERAL EMERGENCY MANAGEMENT AGENCY PAVEL NO. 13589 17150.

ZONING: A1 (AGRICULTURAL), 1 - ONE DWELLING UNIT PER LOT (MINIMUM 1/4 ACRES)

NOTICE: THIS PLAT HAS BEEN REVIEWED FOR CONFORMANCE TO CHAPTER 177 BY STUART P. JORGIE, REGISTERED SURVEYOR AND MAPPER.

CERTIFICATE OF CLERK: I HEREBY CERTIFY THAT THE FOREGOING PLAT HAVING BEEN DULY APPROVED BY THE BOARD OF COUNTY COMMISSIONERS OF SUWANNEE COUNTY, FLORIDA...

NOTED WITHOUT THE SIGNATURE AND THE ORIGINAL VARED SEAL OF A FLORIDA LICENSED SURVEYOR AND MAPPER.

ADOPTION AND DEDICATION:

I HEREBY CERTIFY ON THIS 18th DAY OF APRIL, A.D. 2004, BEFORE ME PERSONALLY APPEARED DANIEL CHAPMAN and RONNIE FROGE, AS COMMISSIONERS TO THE BOARD OF COUNTY COMMISSIONERS OF SUWANNEE COUNTY, FLORIDA...

DEDICATION OF MORTGAGEE:

THIS IS TO CERTIFY THAT THE FOREGOING AND VARIOUS MORTGAGES OF THE LANDS DESCRIBED IN THE FOREGOING DESCRIPTION DO HEREBY BEING DEDICATED TO THE PUBLIC...

STATE OF FLORIDA, COUNTY OF SUWANNEE

APPROVED BY BOARD OF COUNTY COMMISSIONERS, SUWANNEE COUNTY, FLORIDA. Includes signatures of commissioners and a notary public.

